



INDOFINE Chemical Company, Inc.

121 Stryker Lane, Bldg. 30, Suite 1 • Hillsborough, NJ 08844 • U.S.A.

Phone: (908) 359-6778 • FAX: (908) 359-1179

website: www.indofinechemical.com

e-mail: chemical@indofinechemical.com

CERTIFICATE OF ANALYSIS

Catalog Number: K-102

Product Name: **KAEMPFEROL**
(3, 5,7,4' -Tetrahydroxyflavone; Robigenin)

Cas Number: [520-18-3]

Lot Number: 1401411

Chemical Formula: C₁₅H₁₀O₆

Molecular Weight: 286.24

Melting Point 282-285°C

Appearance: Yellow powder

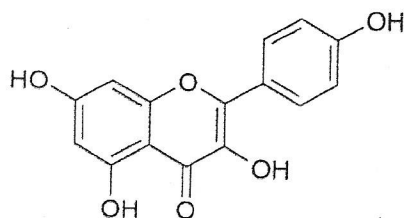
Solubility: Soluble in DMSO

TLC: Chloroform : Methanol (9:1)

NMR Spectrum: Enclosed (Conforms to the structure)

Storage: Store in a cool, dry place

Purity(HPLC): 99.63%





INDOFINE Chemical Company, Inc.

121 Stryker Lane, Bldg. 30, Suite 1 • Hillsborough, NJ 08844 • U.S.A.

Phone: (908) 359-6778 • FAX: (908) 359-1179

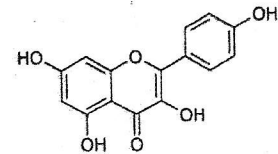
website: www.indofinechemical.com

e-mail: chemical@indofinechemical.com

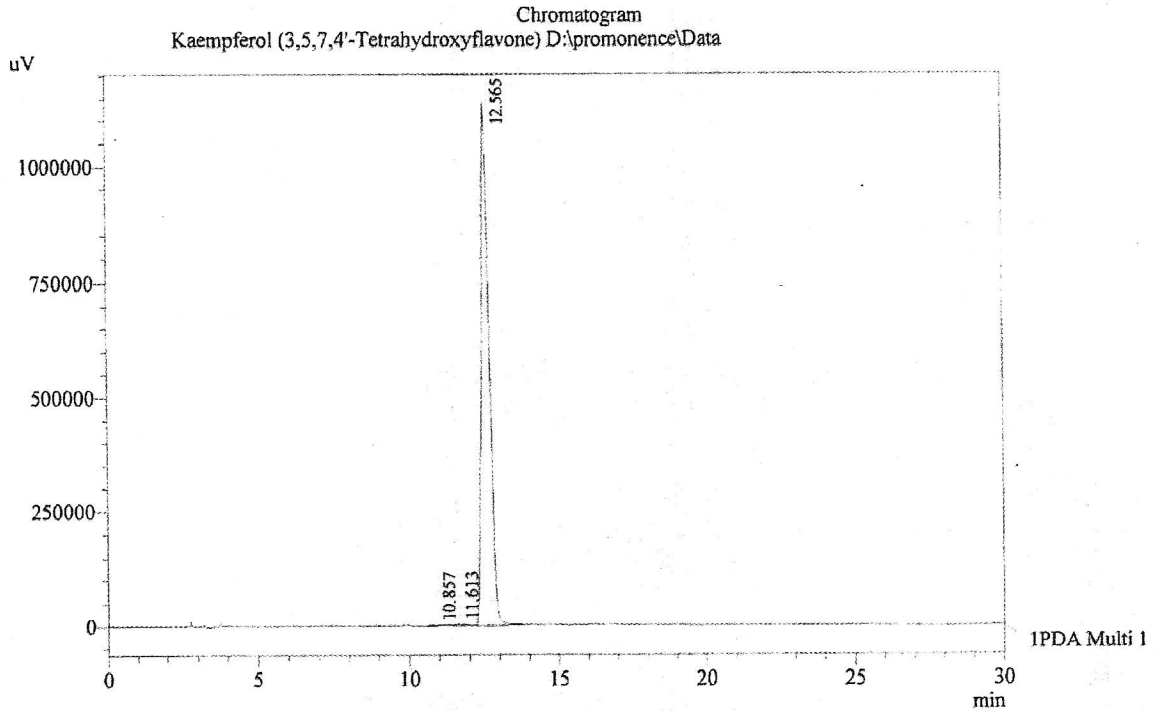
HPLC ANALYSIS

Acquired by : Sanjeev
 Sample Name : Kaempferol (3,5,7,4'-Tetrahydroxyflavone)
 Sample ID : Lot No :1401411
 Injection Volume : 20 uL
 Data Filename : 050314J.lcd
 Method Filename : Linear Gradient.M.lcm

Catalog No.: K-102
 Product Name: Kaempferol
 Lot No.: 1401411



Column : LUNA C-18(2), (250mm x4.6mm 5.0μ)
 Flow : 1.000 mL/min.
 Mobile Phase : A(0.05% TFA in water) B(Acetonitrile)
 0.01 90 10
 12.0 10 90
 20.0 10 90
 23.0 90 10
 30.0 90 10
 Diluent : Methanol



1 PDA Multi 1 / 254nm 4nm

PeakTable

PDA Ch1 254nm 4nm

Peak#	Name	Ret. Time	Area	Area %	Relative Retention Time
1	RT:10.857	10.857	22412	0.11	0.86
2	RT:11.613	11.613	54378	0.26	0.92
3	Kaempferol	12.565	20676277	99.63	1.00
Total			20753067	100.00	



INDOFINE Chemical Company, Inc.

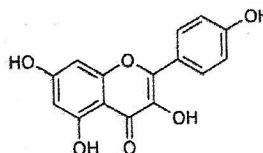
121 Stryker Lane, Bldg. 30, Suite 1 • Hillsborough, NJ 08844 • U.S.A.

Phone: (908) 359-6778 • FAX: (908) 359-1179

website: www.indofinechemical.com

e-mail: chemical@indofinechemical.com

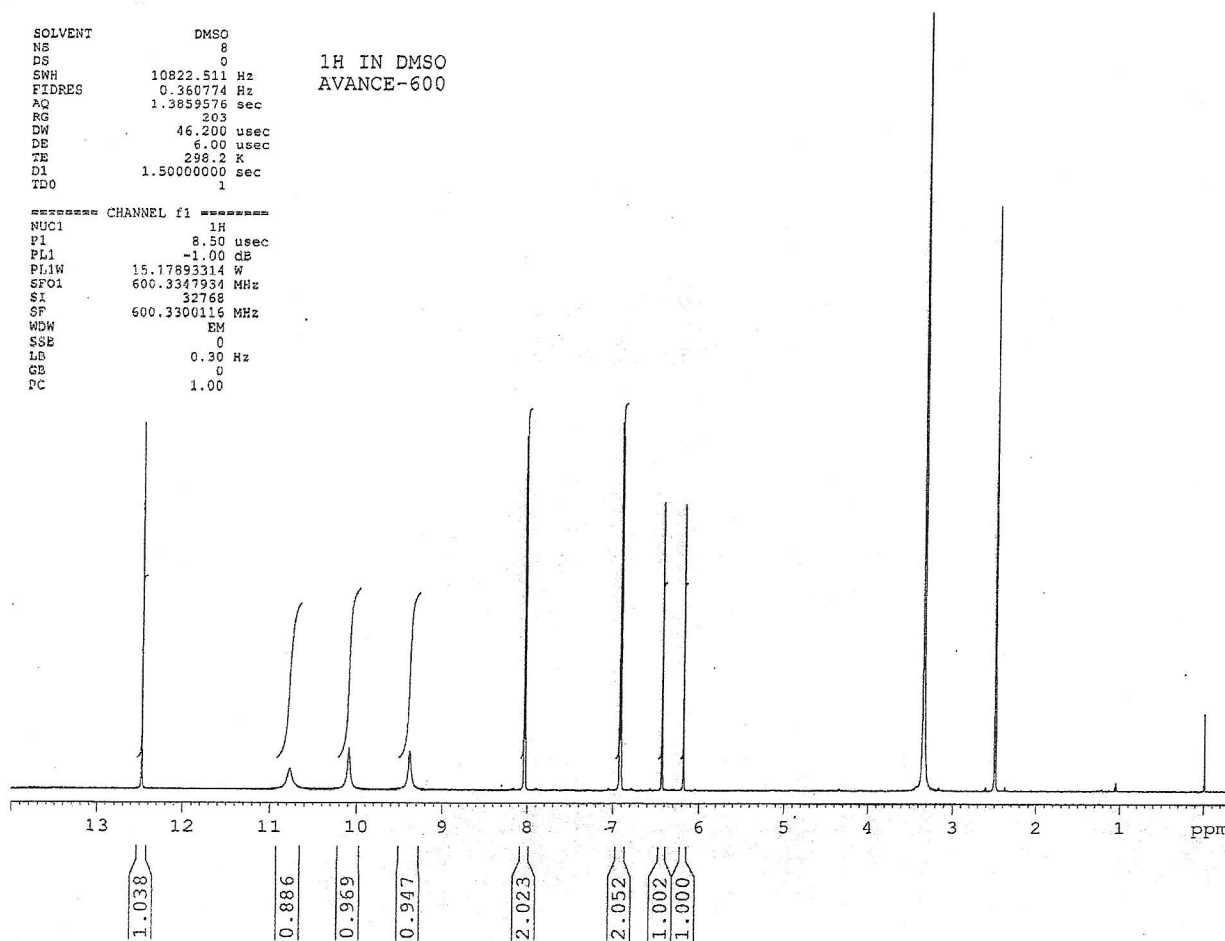
Catalog No.: K-102
Product Name: Kaempferol
Lot No.: 1401411



SOLVENT DMSO
NS 8
DS 0
SWH 10822.511 Hz
FIDRES 0.360774 Hz
AQ 1.3859576 sec
RG 203
DW 46.200 usec
DE 6.00 usec
TE 298.2 K
D1 1.5000000 sec
TDO 1

1H IN DMSO
AVANCE-600

===== CHANNEL f1 =====
NUC1 1H
P1 8.50 usec
PL1 -1.00 dB
PL1W 15.17893314 W
SFO1 600.3347934 MHz
SI 32768
SF 600.3300116 MHz
WDW EM
SSE 0
LB 0.30 Hz
GB 0
PC 1.00





INDOFINE Chemical Company, Inc.

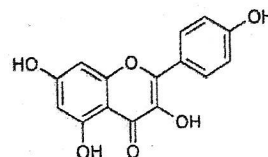
121 Stryker Lane, Bldg. 30, Suite 1 • Hillsborough, NJ 08844 • U.S.A.

Phone: (908) 359-6778 • FAX: (908) 359-1179

website: www.indofinechemical.com

e-mail: chemical@indofinechemical.com

Catalog No.: K-102
Product Name: Kaempferol
Lot No.: 1401411



SOLVENT DMSO
NS 8
DS 0
SWH 10822.511 Hz
FIDRES 0.360774 Hz
AQ 1.3859576 sec
RG 203
DW 46.200 usec
DE 8.00 usec
TE 298.2 K
D1 1.50000000 sec
TD0 1

1H IN DMSO
AVANCE-600

***** CHANNEL f1 *****

NUC1 1H
P1 8.50 usec
PL1 -1.00 dB
PL1W 15.17893314 W
SFO1 600.3347934 MHz
SI 32768
SF 600.3300116 MHz
WDW EM
SSB 0
LB 0.30 Hz
GB 0
PC 1.00

